

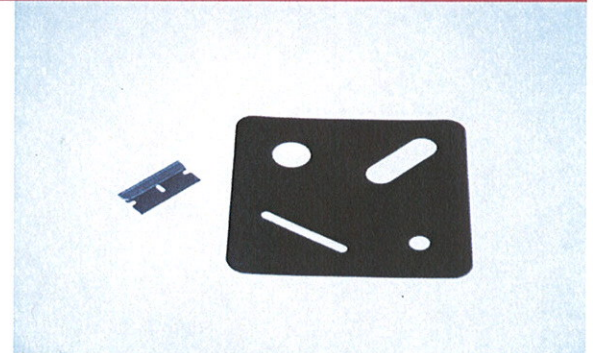


# SHIM-MASK®

Patent Pending  
Part # 100110

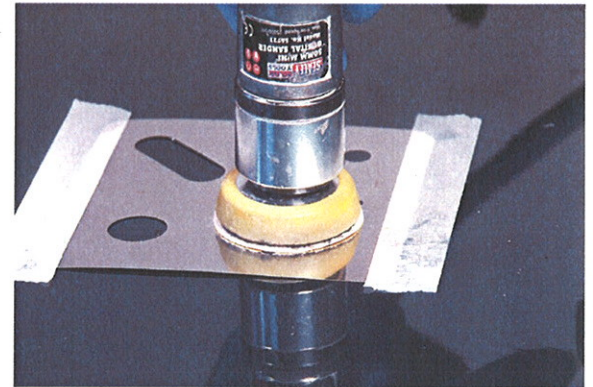
## WHEN TO USE SHIM-MASK® ?

- On paint and lacquer runs
- Floaters and imperfections
- To minimize area when sanding paint filled chips or scratches



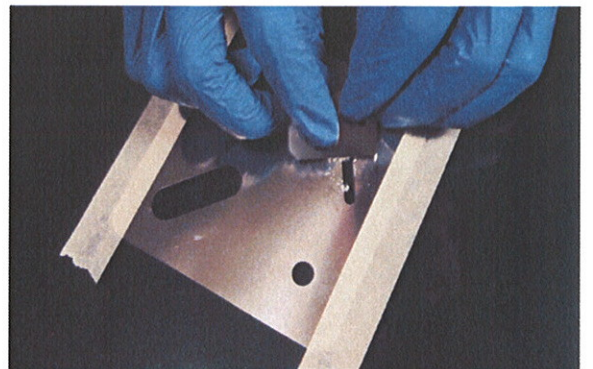
## WHY USE SHIM-MASK® ?

- Stainless steel 304 provides durability for re-use
- Chemical etching of shapes means no burred edges giving you a perfectly flat finish
- Choice of 4 stencil shapes allows you to tackle different jobs with the same tool



## WHO USES SHIM-MASK® ?

- Professional and DIY painters
- SMART/Spot repairers
- Vehicle refinishers





# SHIM-MASK®

Patent Pending  
Part # 100110

## INSTRUCTIONS FOR USE:

Ensure that imperfection is completely dried/cured and employ with either or both of the following techniques: place suitable stencil shape over imperfection and hold it FLAT and FIRMLY in place with fingers, or use masking tape.

## SINGLE-EDGE RAZOR BLADE

1. Holding a new single edge razor blade at approximately  $160^{\circ}$  to the surface and applying moderate pressure, slice/shave across the stencil body to remove exposed imperfection in a "guillotine" action.
2. Remove stencil and store in sleeve for reuse.

## SANDING BLOCK OR MACHINE SANDER

1. Sand flat across stencil body removing both metallic stencil material and imperfection while ensuring that edges of sanding block or pad do not enter stencil perimeter..
2. Use 800-1000 grit intially finishing with 2000 grit. Use wet or dry.
3. Feather repair area by overlapping sanded area with surrounding area at the perimeter of the repair area and a finer abrasive.
4. Final feathering can be achieved by placing a slightly larger stencil shape over the area and using 2000 grit abrasive.
5. Remove stencil and store in sleeve for re-use. Wipe off metallic dust and polish repair area.